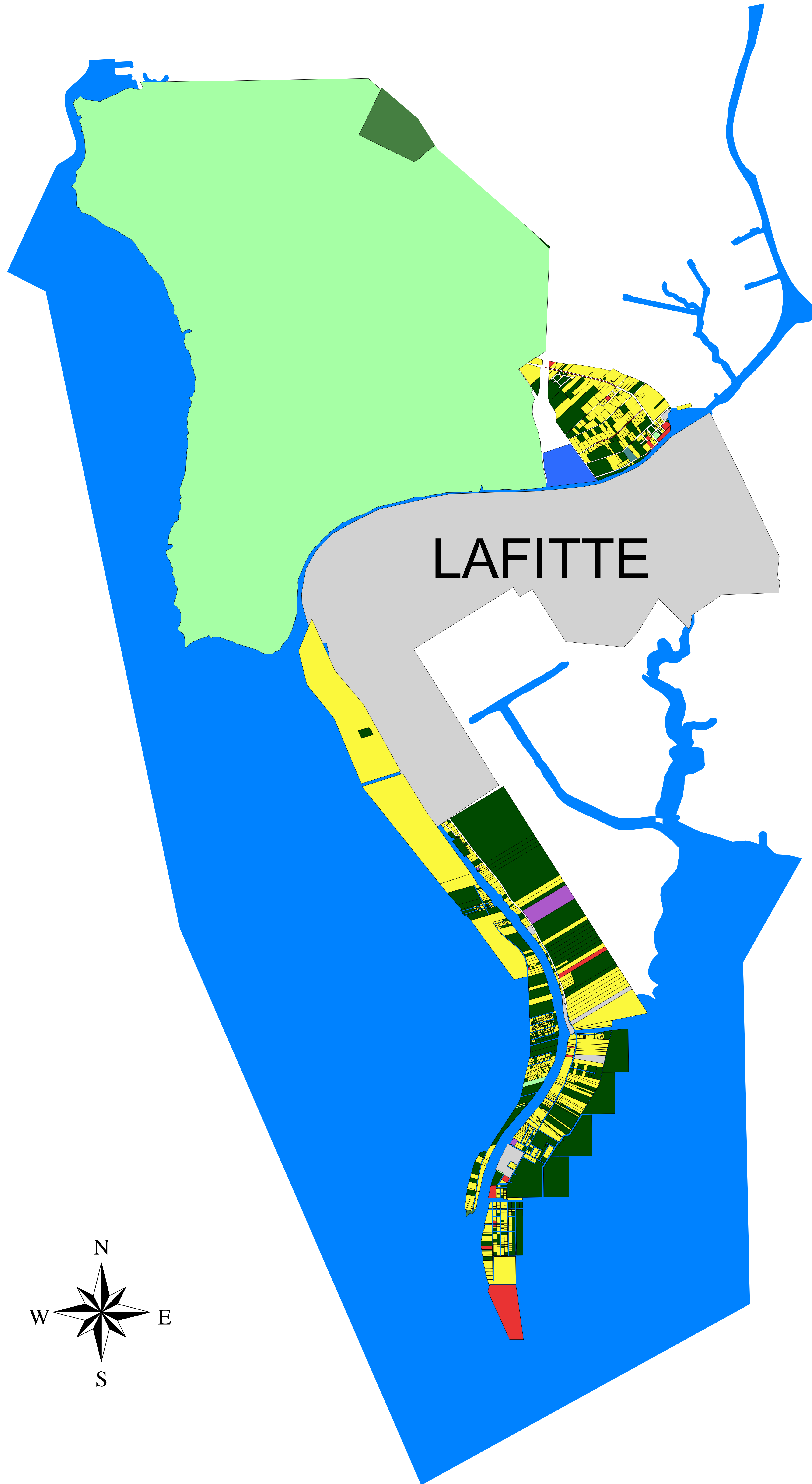


West Bank Existing Land Use Area Outside Of The Levee



Existing Land Use

- Residence or accomodation functions
- General Sales or services
- Manufacturing and wholesale trade
- Transportation, communication, information, and utilities
- Arts, entertainment, and recreation
- Education, public amin., health care, other inst.
- Construction-related businesses
- Mining and extraction establishments
- Agriculture, forestry, fishing and hunting
- Not In Use

Existing Land Use Data Source: University of New Orleans College of Urban and Public Affairs Land Use Survey

The preparation of this document was financed in part through grants from the U.S. Department of Transportation, Federal Highway Administration S.P. No. 700-99-0265, F.A.P. No. TCSP-9901 (512) in accordance with the Transportation Equity Act for the 21st Century (1998).

The information shown on this drawing was prepared for Jefferson Parish using aerial photography and field investigations. The Parish makes no warranty as to its accuracy. The user assumes all responsibilities for verifying the accuracy of any feature or dimension which may be critical to the intended use of this data.

Envision 2020 Jefferson



Problem? Solved.

www.gcr1.com
 TEL 504 304 2500 / 800 259 6192
 FAX 504 304 2525
 2021 Lakeshore Drive
 New Orleans, LA 70122
 UNO Research & Technology Park
 Advanced Technology Center

Figure 4.8: Existing Land Use Map
West Bank: Outside of Levee